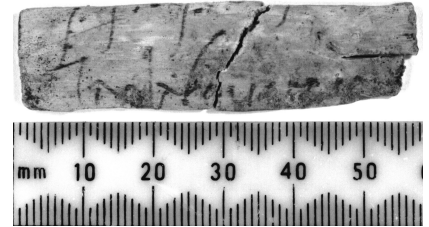
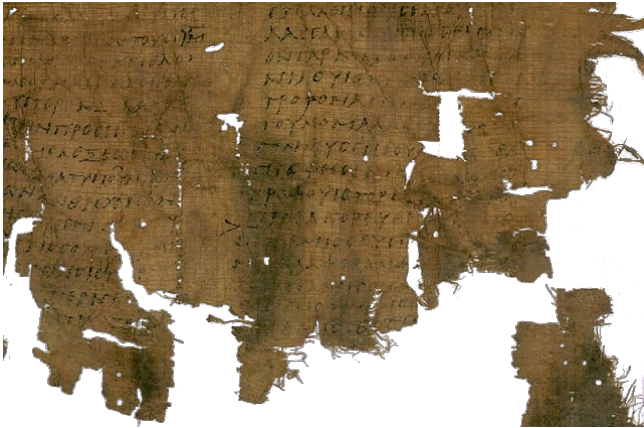


A Virtual Research Environment for the Study of Documents and Manuscripts



John Pybus, Ruth Kirkham, Pin Hu

What is a Virtual Research Environment?

Definition of a VRE:

“The purpose of a VRE is to help researchers in all disciplines manage the increasingly complex range of tasks involved in carrying out research. A VRE will provide a framework of resources to support the underlying processes of research on both small and large scales, particularly for those disciplines which are not well catered for by the current infrastructure.” (JISC)

“A set of online tools, systems and processes interoperating to facilitate or enhance the research process within and without institutional boundaries.” (Mike Fraser – OUCS)



Building a VRE for the Humanities

- 15 month project (started summer 2005)
- Capturing user requirements from researchers across the division
- How do the Humanities differ from large scale Science?
- No predefined technology (ground up approach)
- Build 3 to 4 prototypes/demonstrators

A Virtual Research Environment for the Study of Documents and Manuscripts

Mozilla Firefox

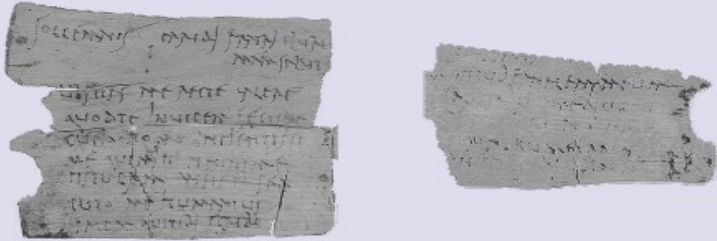
File Edit View History Bookmarks Tools Help

← + → ↻ × 🏠

http://pybus.oerc.ox.ac.uk/gsv/trans-b.html

▶ 🗪

http://pybus..../trans-b.html



Selected Images:

☒ 311_1-front

☒ 311_2-front

Done

Search 🔍

Vindolanda Tablets ▾

Go!

💡 John

online

▼ Unfiled (0/2)

👤 ruth

👤 System

+ 📁

👤 ruth

History

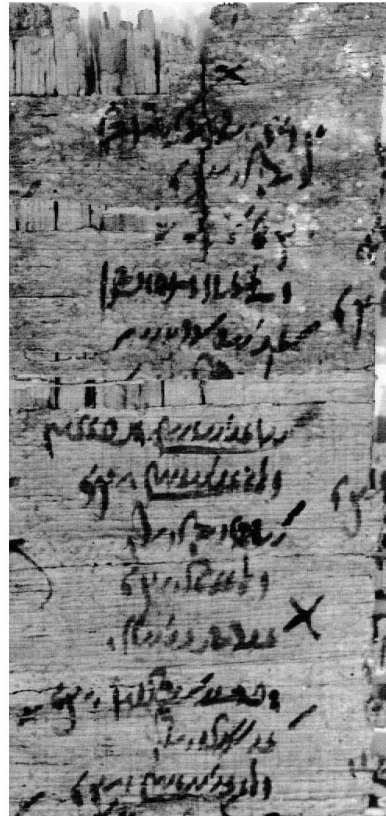
<John> Are ready to work on the first image?

<ruth> Yes I've got my cup of tea ready and can see the image in the workspace

▼ OK

Send

The Task



col. vi

115

X

116

sh . 'P3'-šr-Hnm s3 P3-di-Wsir

117

T4-B3st.t t3y=f rmt.t

118

rmt 6 (wp-s.t) 'hwt 3'

119

n3 hrd.w n3 rs.w

120

/ Hr (s3) ~~31~~ hr ..

121

[T3]-'šr.t-Hnm t3y=f rmt.t'

122

P3-di-Hr-p3-bik s3 Yn. . .

123

/ T3-šr.t-Hr-p3-bik t3y=f rmt.t

124

P3-di-~~W~~ sir p3y=f sn

125

T3-šr(t)-~~Tukw~~. t3y=f rmt.t

126

X 'Hr-~~Is~~-Is.t' s3 Hr-p3-ntr ~~X~~

127

~~4~~ T3-3brgwn t3y=f rmt.t

128

~~1~~ Hr-llw p3y=f sn

129

T3-šr.t-Hr-p3-bik t3y=f rmt.t

top of column

T3-B3st.t !

onverwacht !

T3-wp-(w3w.t) ⁶ mogetij-e

! per P3 !

policemen with

Imm-^{hkr} ~~ap~~ (?) ₁₂₁

g of t of m ?

Reading the Lycopolite census from Rifeh

Vindolanda Tablets Online

Search database

View tablet number
(118-573):

General search

(Excluding Tablets
database)

Text:

Images:

[Site map](#)

This online edition of the Vindolanda writing tablets, excavated from the Roman fort at Vindolanda in northern England, includes the following elements:

Tablets - a searchable online edition of the tablets (volumes I and II)

Exhibition - an introduction to the tablets and their context

Reference - a guide to aspects of the tablets' content

Help - navigation and using the site

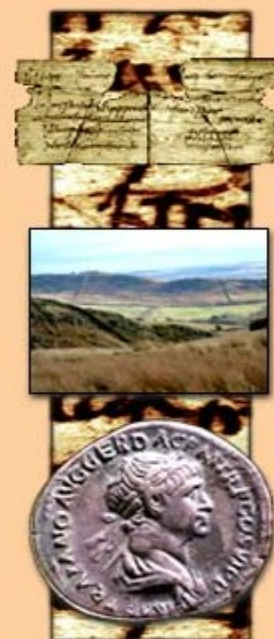
Also available are [highlights from the tablets](#).

The website is part of the [Script, Image and the Culture of Writing in the Ancient World](#) programme, supported by the [Andrew W. Mellon Foundation](#). It is a collaborative project between the [Centre for the Study of Ancient Documents](#) and the [Academic Computing Development Team](#), Oxford University.

Scholarly publications should refer to this site as:

Vindolanda Tablets Online <http://vindolanda.csad.ox.ac.uk/>

Feedback: if you are using Vindolanda Tablets Online for teaching, research or general interest, please send us your [comments](#) on the site.




```

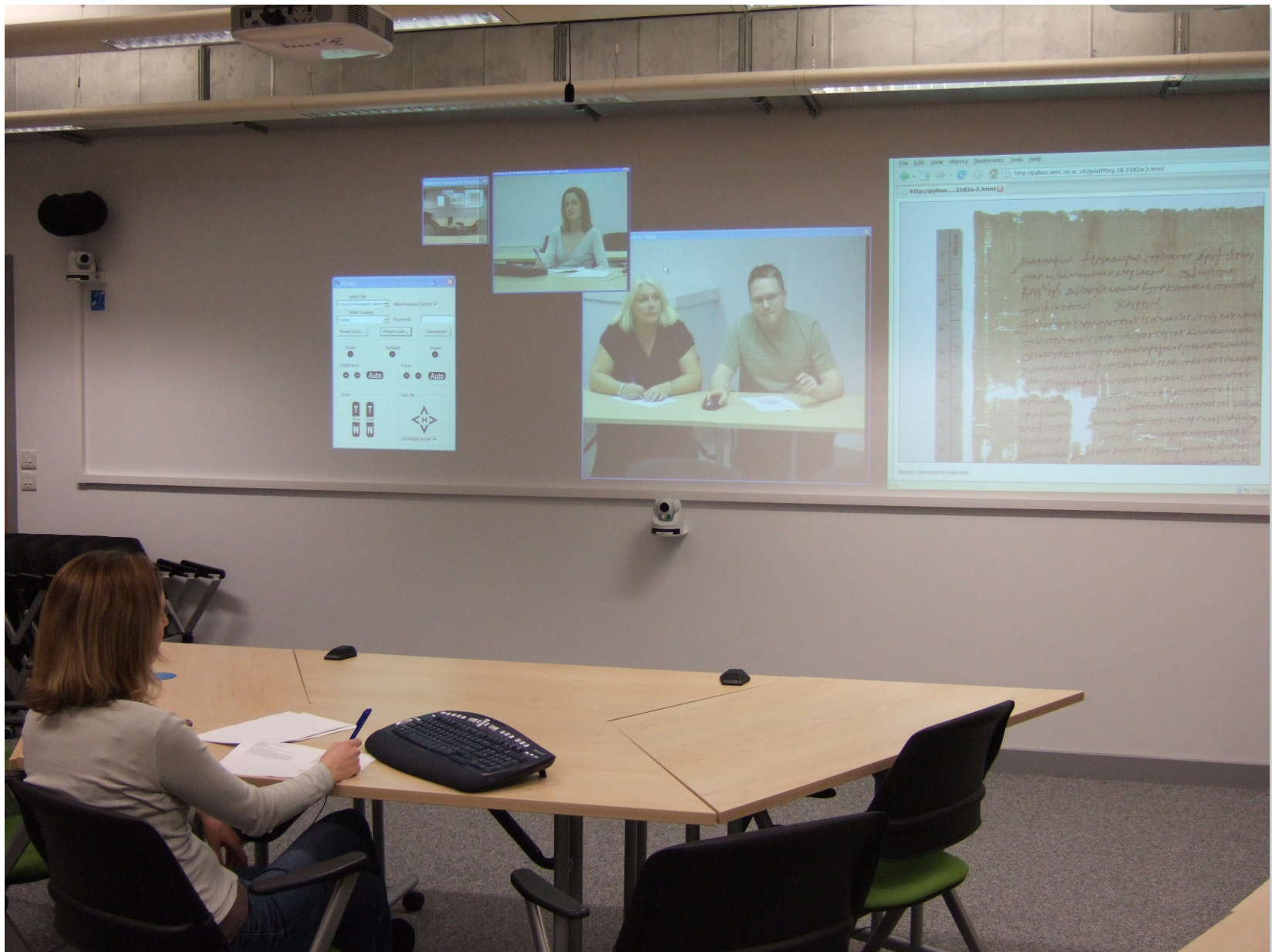
- <div type="edition" lang="lat">
  - <ab n="text">
    <br/>
    . . . . .
    <lb id="line-1" n="1"/>
    <unclear>L</unclear>
    epidinam tuam a me sal
    <unclear>ut</unclear>
    a
    <lb id="line-2" n="2"/>
    <handShift new="hand2"/>
    ua
    <unclear>le</unclear>
    <unclear>mi</unclear>
    <unclear>do</unclear>
    mine
    <lb id="line-3" n="3"/>
    frater karissime
    <pb n="back"/>
    <lb id="lineback-1" n="1"/>
    <handShift new="hand1"/>
    Flauio
    <unclear>Ceri</unclear>

```


Data Sources

- Integrated searches across databanks of texts and images, e.g.
 - Duke Databank of Documentary Papyri
 - Heidelberger Gesamtverzeichnis
 - APIS
 - Vindolanda Tablets Online
 - databases of Greek and Latin inscriptions
 - on-line reference resources, dictionaries
 - Lexicon of Greek Personal Names
 - LDAB
 - Fayum Villages Database
 - etc.

A Virtual Research Environment for the Study of Documents and Manuscripts



Architecture

uPortal - Mozilla Firefox

File Edit View History Bookmarks Tools Help

http://vre.humanities.ox.ac.uk/tag.6c420b71f58a0bcd.render.userLayoutRootNode.uP?uP_root=rc

Welcome Admin User [Home](#) | [Site Map](#) | [Channel Admin](#) | [Preferences](#) | [Logout](#)

uportal
by JASIG

Portlets Main Entertainment Admin Tools Development CWebProxy


Google Portlet

Search

powered by Google™

Word of the Day

A new word is presented every day with its definition and example sentences from actual published works.



ensorcell: Dictionary.com Word of the Day
ensorcell: to enchant; to bewitch.

Test Portlet 1

This portlet is a portlet specification compatibility test portlet. It provides several tests of varying complexities which will assist in evaluating compliance with the portlet specification. It was originally developed for testing Apache Pluto, however, it does not utilize any proprietary APIs and should work with all compliant portlet containers.

Please select one of the following tests:

Simple Parameter Test	Test
Simple Attribute Test	Test
Complex Attribute Test	Test
External App Scoped Attribute Test	Test
Context Init Parameter Test	Test
Simple Preference Test	Test
Portlet Mode Test	Test
Window State Test	Test
Misc Test	Test
Security Mapping Test	Test
Resource Bundle Test	Test

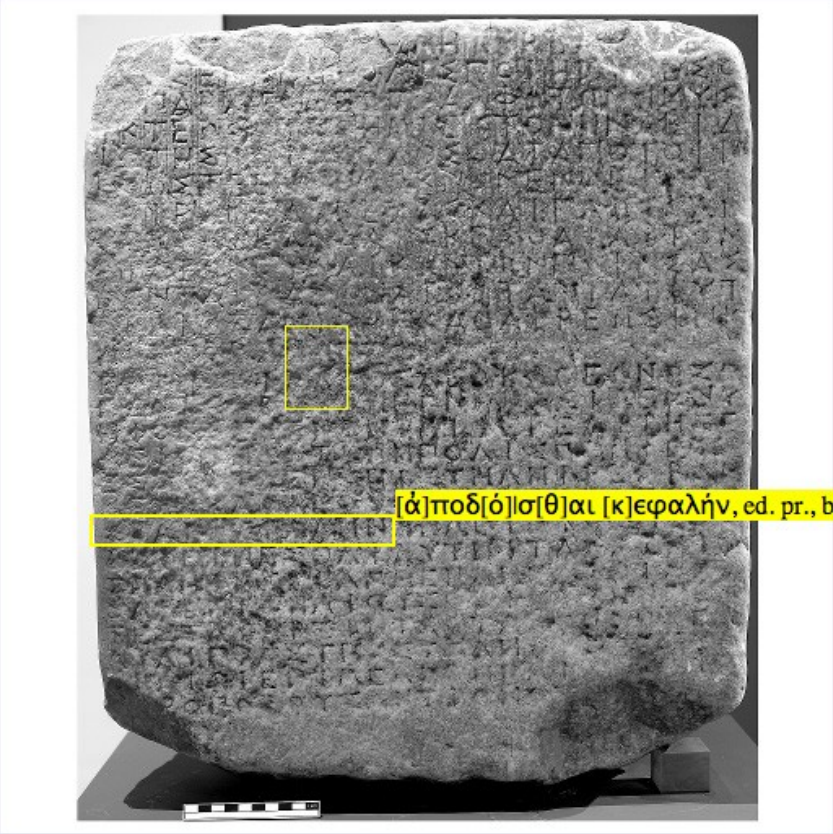
Library Search

http://vre.humanities.ox.ac.uk/tag.ffe4bd64a8291102.render.userLayoutRootNode.uP?uP_root=root&uP_sparam=activeTab&activeTab=2

Mozilla Firefox

http://pybus.oerc.ox.ac.uk/vwsad/test-ann4.html#

Google



[ἀ]ποδ[ό]σ[θ]αι [κ]εφαλὴν, ed. pr., but read πόδ[α]ς καὶ [κ]εφαλὴν

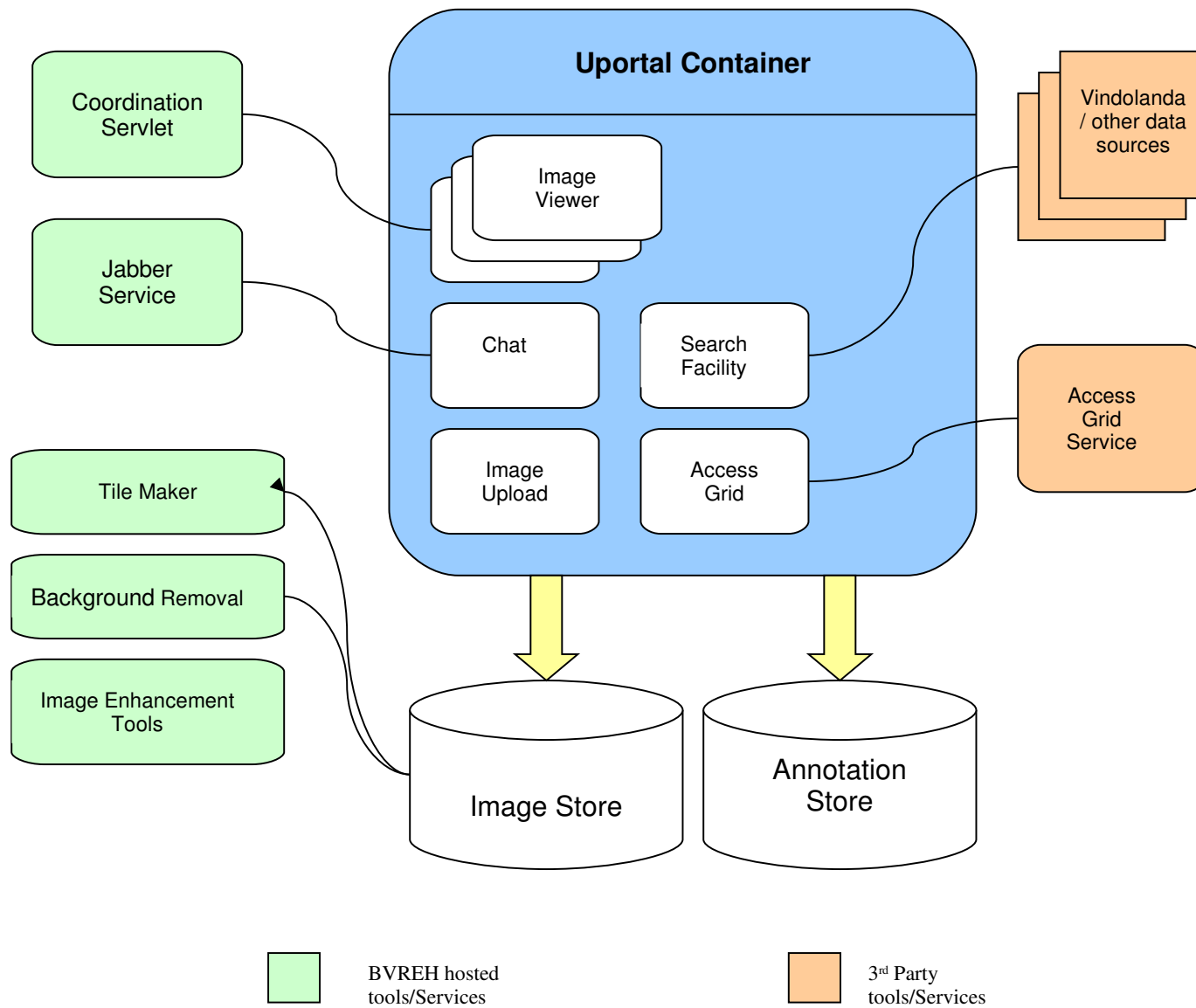
☐ Chios-M054.2

☒ Show annotations

New Annotation

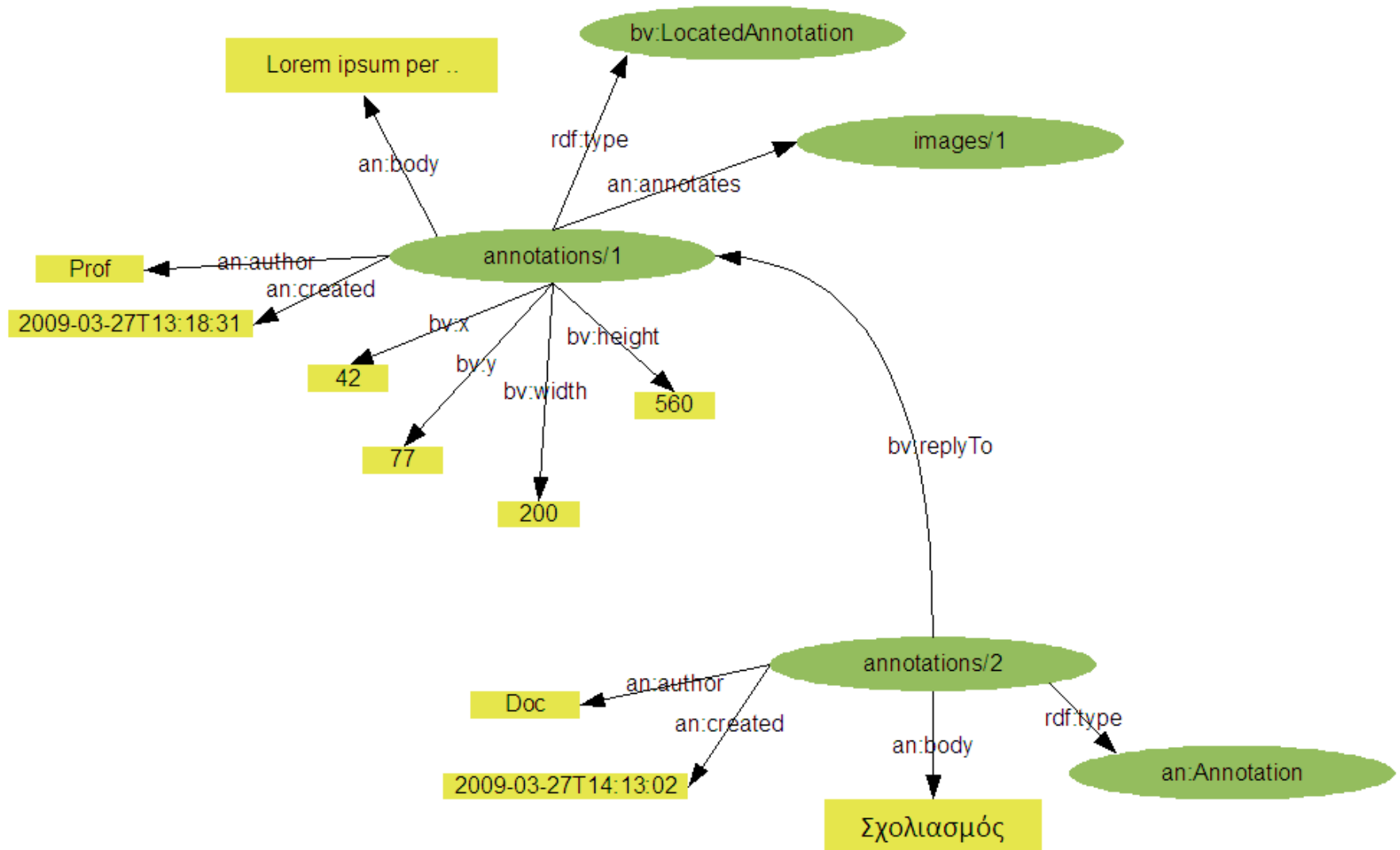
http://pybus.oerc.ox.ac.uk/vwsad/test-ann4.html#

A Virtual Research Environment for the Study of Documents and Manuscripts



A Virtual Research Environment for the Study of Documents and Manuscripts

BVREH RDF Annotation Data Model Example Data KP 27th March 09



an = <http://www.w3.org/2000/10/annotation-ns#body>
bv = <http://bvreh.humanities.ox.ac.uk/vocab/1.0#>
rdf = <http://www.w3.org/1999/02/22-rdf-syntax-ns#type>

A Virtual Research Environment for the Study of Documents and Manuscripts



- Technology moves on:
 - Portal standards → web gadgets
- Improve look and feel
- Links to Interpretation Support System
 - More complex workflows
- Allow user to control image processing from web browser
 - ENGAGE project

Over to Pin